

RGS SERIES II RECTANGULAR LED SHOP LIGHT

VERSATILE, EFFICIENT
& ENVIRONMENTALLY FRIENDLY

Syntech's new RGS recessed shop light series is a versatile and distinct LED-based light that provides lighting designers with a broad range of design options to illuminate and accent architecture for internal lighting applications.

Uncomplicated, sophisticated design queues work seamlessly with architectural elements creating glare free, low maintenance light for general illumination needs. The main housing of the RGS Series is manufactured using light weight, die cast aluminium, and is available in a wide range wattages.

Designed with ease of installation in mind the RGS Series uses a industry standard hole cut out dimension used by the markets leading rectangular halogen and metal halide fixtures. In retrofit applications the RSL Series can normally be installed into the existing cut out aperture reducing installation cost

KEY TECHNICAL FEATURES

- Full Fitting Replacement
- Gimbal Functionality
- Direct Replacement for Most Rectangular Fittings
- Samsung LED Chip Set
- High Output To Wattage
- Fluorescent Free Technology
- 50,000 Industry Rated Life Span
- Available in 3 Industry Standard Colours



UP TO
80% MORE
EFFICIENT*
50,000 HOURS RATED LIFE

*Power saving of up to 80% over traditional Halogen and Metal Halide Luminaires



DIMMABLE



PLUG BASE



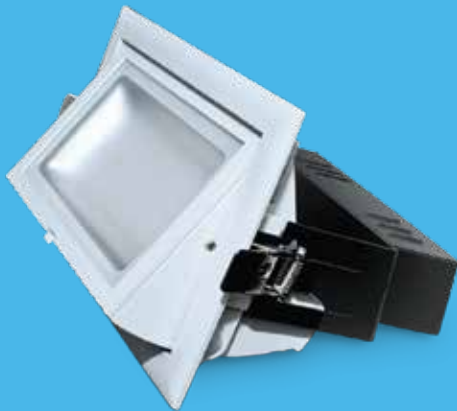
PLUG AND PLAY



HARDWIRED (Optional)

PRODUCT SPECIFICATIONS

Watts	20W, 28W, 38W, 48W
Colour Accuracy (CRI)	>80
Rated Luminous Flux	1850lm, 2400lm, 3200lm, 4300lm
Input Voltage	240v 50hz
Power Factor	.95
Luminous Efficacy	92lm/W, 85lm/W, 85lm/W, 85lm/W
Beam Angle	120°
Average Lifespan	50,000 hrs
Operating Temperature	-40°C – +50°C
Operating Humidity	< 95 %
Housing Protection Rating	IP20



ORDERING INFORMATION

Part Code:	Description:	Colour Code:	
SYN-OB-20WRGS-120-1.5 Driver: LF-G213-20W	20 Watt LED Lamp & Driver complete with 1.5m power cord	30°	3000°K
		40°	4000°K
		55°	5500°K
SYN-OB-28WRGS-120-1.5 Driver: LF-G407-28W	28 Watt LED Lamp & Driver complete with 1.5m power cord	30°	3000°K
		40°	4000°K
		55°	5500°K
SYN-OB-38WRGS-120-1.5 Driver: LF-G407A-38W	38 Watt LED Lamp & Driver complete with 1.5m power cord	30°	3000°K
		40°	4000°K
		55°	5500°K
SYN-OB-48WRGS-120-1.5 Driver: LF-G210-50W	50 Watt LED Lamp & Driver complete with 1.5m power cord	30°	3000°K
		40°	4000°K
		55°	5500°K

Example: RGS Series 38 Watt Shop Light in 5500°K colour SYN-OB38WRGS-120-1.5-55.



39/5 Anella Ave Castle Hill NSW 2154 | P: 1300 721 820 | F: 02 8602 6294
info@syntechinternational.com.au | www.syntechinternational.com.au