

LINEA Series

High Performance IP65 LED Linear Luminaire

- Linea series with multiple integrated Eco Sensor options.
- Up to 70% increased energy savings
- 2ft & 4ft Configurations
- High Efficiency
- Quick Snap-Fit Installation
- Available in Standard & Emergency Variants.
- High Efficiency /Quick Installation
- 5500k



Advanced LED Lighting

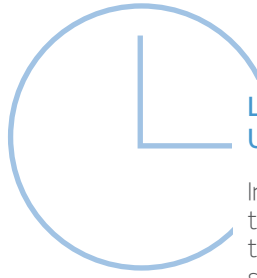
Linea Series 5-year extended warranty on Luminaire and 12mths Battery.
Linea series extended product replacement warranty requires online registration.
Visit www.syntechinternational.com.au/warranty to register your product.



The Linea Series of IP65 Rated Linear fittings is manufactured using high quality UV stable polycarbonate materials. The Solid-State design delivers high lumen output with excellent light distribution properties.

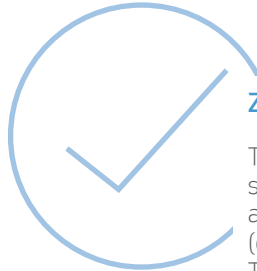
Developed to replace inefficient linear fluorescent technology, the new Linea Series is available in standard 2ft (18w) and 4ft (36w) configurations and comes with an integrated motion/lux sensor as a standard feature.

The integrated sensor can be programmed to adjust luminaire performance values such as Sensor Detection Range, Eco-Light (Occupancy) Light Level and Ambient Lux Value



Low Glare, Integrated Sensor Uniform Light Distribution

Incorporating a “Low Glare” frosted lens, the Linea series delivers uniform light value throughout the application area. The inbuilt sensor system allows for site specific configuration of occupancy, ambient light, and illumination cadence values.



Zero Maintenance

The Linea series incorporates an integrated solid-state “Linear LED Light Engine” with an integrated driver & standby power pack (emergency variants only). The Linea series incorporates advanced SMD LED technology with an LM70 rating that exceed 50,000 hours.



Ultra-long life

The Linea series is backed by 5-year commercial product replacement warranty for complete assurance of performance reliability.

(*Battery Pack carries the industry standard 12month warranty)



LINEA SERIES

At Syntech, we believe that a manufacturers warranty is your assurance of quality.

This is why the Linea Series is supported by a full five-year product replacement warranty.

All Syntech products comply to the latest AS/NZS Lighting Standards.

TO REGISTER YOUR WARRANTY, SIMPLY GO TO www.syntechinternational.com.au/warranty

SERVICES & SUPPORT

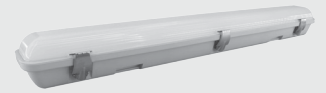
If you have any questions about the Linea range, please contact a member of our team.

CUSTOMER SERVICE

1300 721 820

EMAIL

admin@syntechinternational.com.au

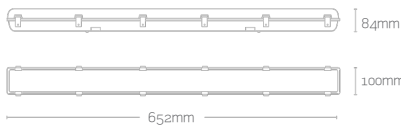


Linea Specifications

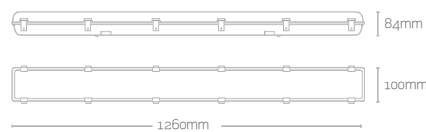
High Performance IP65 LED Linear Luminaire

- Ultra-efficient 110 lumens per circuit Watt
- 70% Energy Savings
- Ideal retrofit solution
- IP65, ideal for use in industrial and external applications
- Slimline profile
- Instant start up, flicker-free performance
- Polycarbonate diffuser and body
- Available in Emergency Variants
- Zero Ongoing Maintenance

SYN-CL-LSM-SSL-2FT-18W
SYN-CL-LSM-SSL-2FT-18WEM (Emergency Variant)

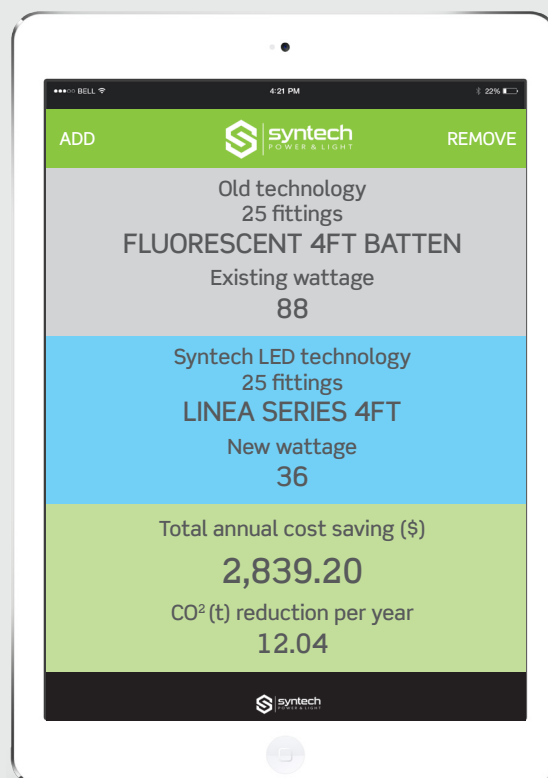


SYN-CL-LSM-SSL-4FT-36W
SYN-CL-LSM-SSL-4FT-36WEM (Emergency Variant)



- Integrated Sensor
- 5500k
- 2ft / 18W
- 4ft / 36w
- Emergency Variants Available in Both Sizes
- 110 LPW
- Lumens per Watt

CODE	DESCRIPTION	COLOUR TEMP	LED	LUMENS	LPW	IP
SYN-CL-LSM-SSL-2FT-18W	LINEA 18w 2 Foot LED Linear Luminaire with integrated Driver and sensor system.	5500K	18W	1980	110lm	IP65
SYN-CL-LSM-SSL-2FT-18WEM	LINEA 18w 2 Foot Emergency Luminaire with integrated Driver and sensor system.	5500K	18W	1980	110lm	IP65
SYN-CL-LSM-SSL-4FT-36W	LINEA 36w 4 Foot LED Linear Luminaire with integrated Driver and sensor system.	5500K	36W	3960	110lm	IP65
SYN-CL-LSM-SSL-4FT-36WEM	LINEA 36w 4 Foot Emergency Luminaire with integrated Driver and sensor system	5500K	36W	3960	110lm	IP65





syntechinternational.com.au
1300 721 820