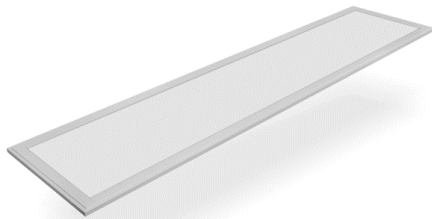




syntech
POWER & LIGHT

INSTALLATION MANUEL

LUMINOS SERIES CCT ADJUSTABLE LED PANEL



PLEASE READ THIS MANUEL CAREFULLY **PRIOR TO INSTALLATION**. RETAIN A COPY
AT ALL TIMES FOR FUTURE REFERENCE

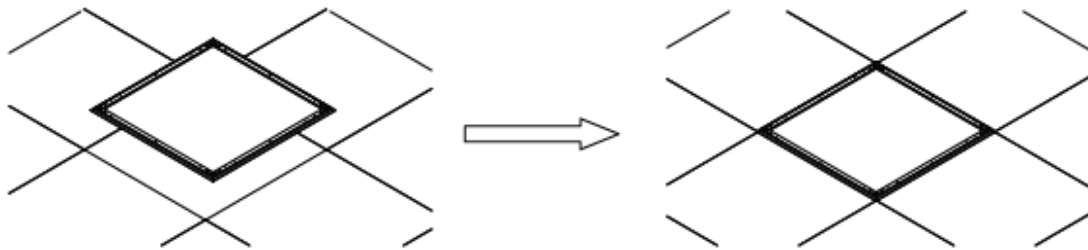
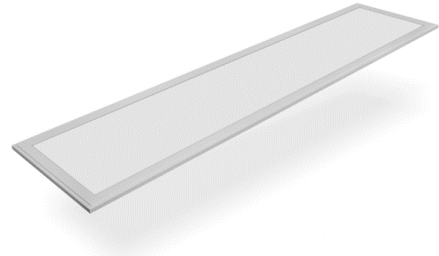
SYNTECH MODELS NUMBERS

SYN-LFP-CCT32W-1230-1.2 / SYN-LFP-CCT32W-6060-1.2

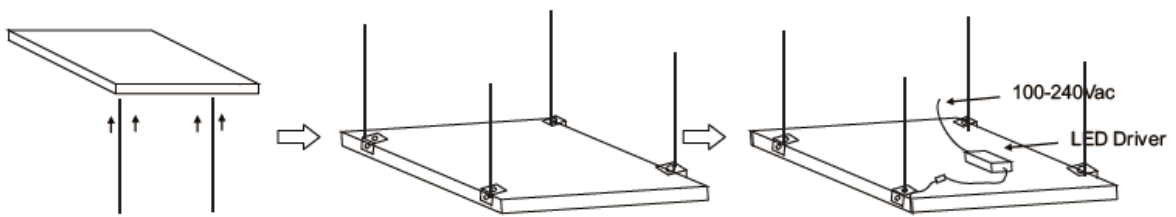
INSTALLATION MANUEL

Schematic diagram for suspended ceiling application.

1. Disconnect Mains Power
2. Remove the ceiling tile and pass the LED Panel through the aperture and connect to power supply via GPO Power Outlet located in the ceiling cavity.
3. Once all luminaires are installed, reconnect power supply.



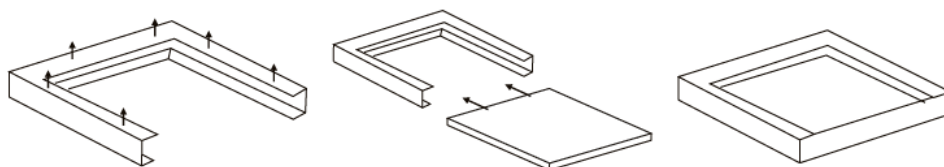
Schematic diagram for surface mount ceiling application.



- | | | |
|------------------------------------|---|--|
| 1. Fix suspension cable to Ceiling | 2. Fix Cables to ceiling hooks
via mounting plates provided. | 2. Mount LED Driver
& corresponding mounting clips to panel via inline connector and on the panel |
|------------------------------------|---|--|

Schematic diagram for ceiling mounted installation

1. Assemble the 3 sections of the aluminium frame prior to mounting to the ceiling. Proceed to Install the open frame (3pcs) to the ceiling with fasteners provided.
2. Insert the LED panel into the frame and connect to mains power.
3. Insert the final piece of the open mounting frame and screw into place.



Note: Syntech International strongly recommends this product be installed by a licensed electrician